

NetworkPlayer

User Guide

Netzwerk_Durchlauf rechts nach links.s3s
Schrift_kacheln.s3s

Insert network address

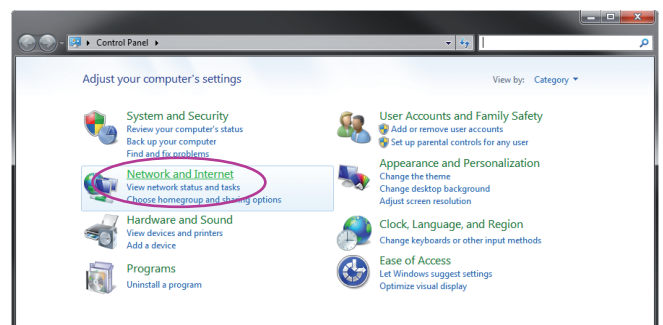
Please note: you have to insert the network address before using the Player.

Without changing the network address an error message appears and the program cannot start. Once these preparations have been completed, you can start the NetworkPlayer.

Configuration of Art-Net/IP addresses (WIN 7)

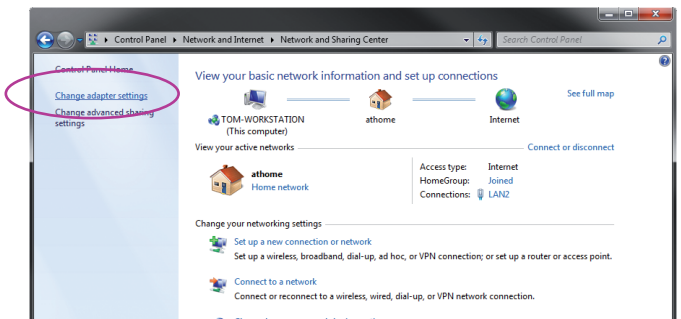
Step 1

Open Windows Start Menu, click on **Control Panel** and open **Network and Internet**. Click on **Network and Sharing Center**.



Step 2

Click on **Change adapter settings**.



Step 3

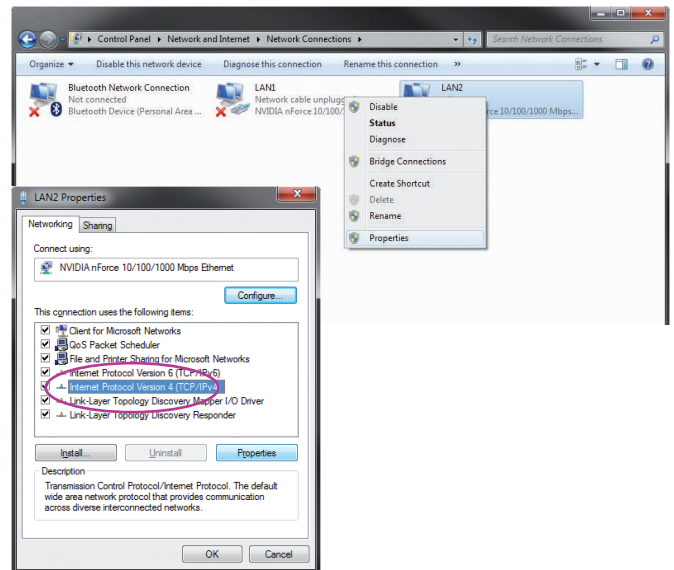
Right click on the network interface which should be your Art-Net interface and select **Properties**.

Click on Internet Protocol Version 4 (TCP/IPv4) and click on the button **Properties**.

Step 4

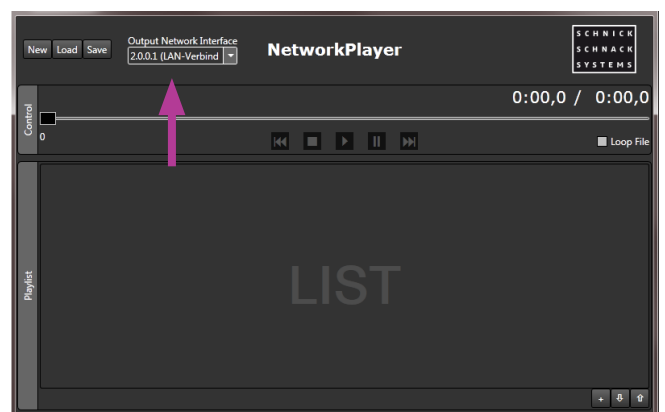
Choose **Use the following IP address** and enter the IP **2.0.0.1** and the subnet mask **255.0.0.0**.

Please note already registered settings. So you can get back to your home- or office network later.



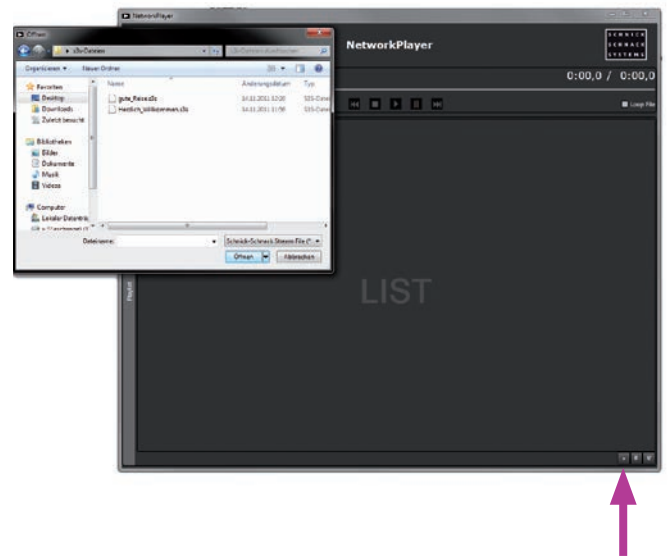
Controlling of network address in the programm

In the window **Output Network Interface** should now appear **2.0.0.1** if you are connected with a network cable to our System Power Supplies.



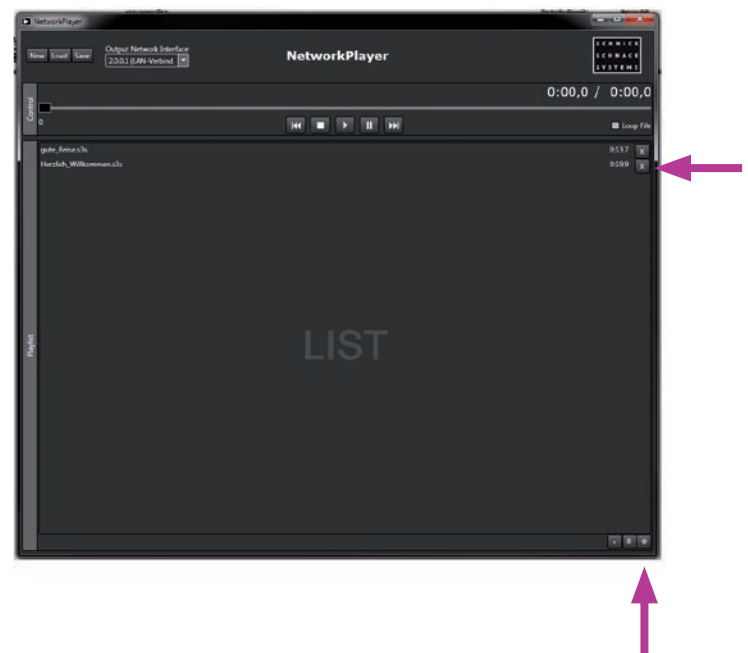
Load *.s3s file

With the **symbol plus** you can upload your created scrolling text as *.s3s file into the playlist.



Create playlist

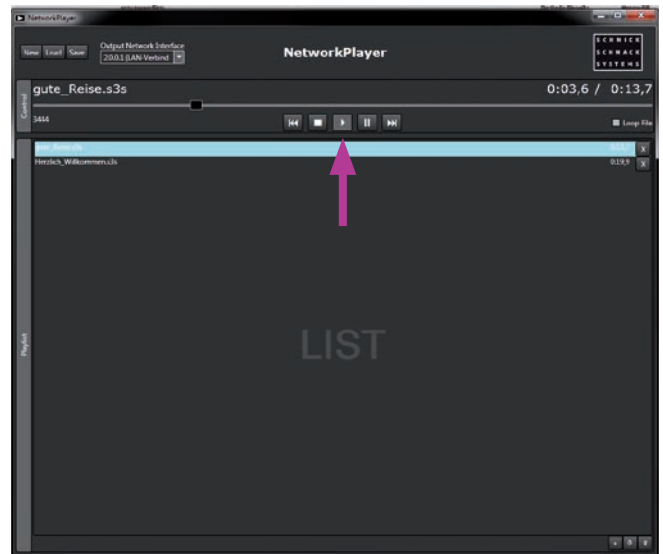
Use the **arrow keys** to change the order of files. The **X button** removes files from the player.



Playback playlist

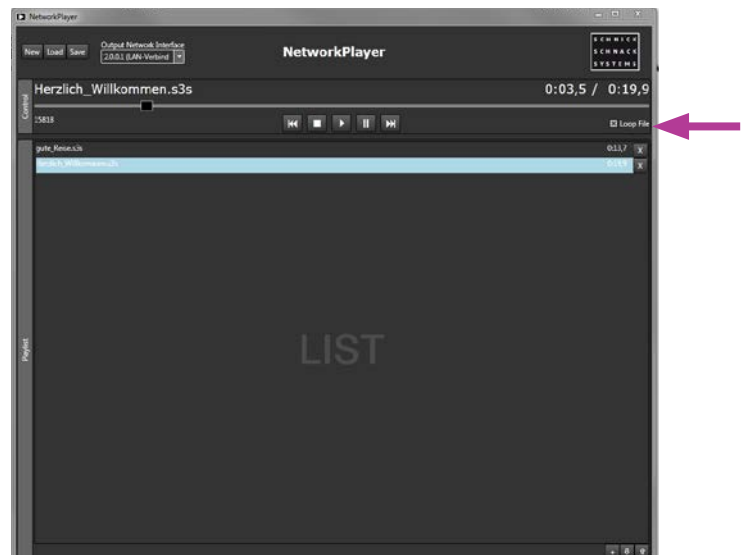
The whole file will now be shown in light blue after you selected the file.

Now you can select your desired file and **press play**.



Playback individual files

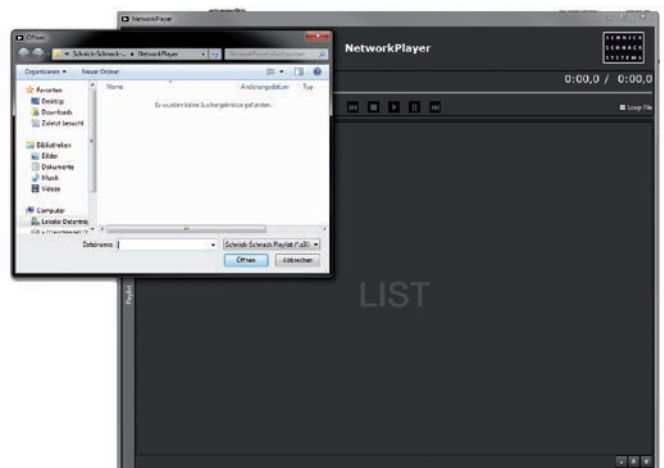
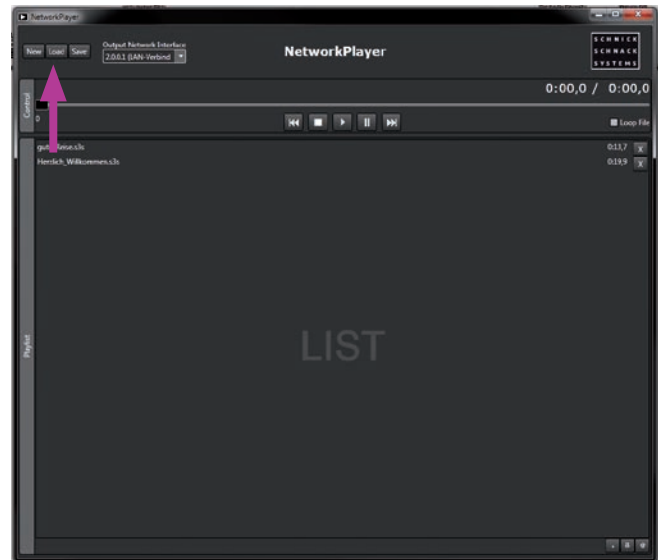
If only a specific video is to be played from a playlist with several files, the field **Loop File** must be selected and an **X** appears.



Save playlist

With **Save** you can store the complete playlist as *.s3l file.

The function **Load** loads up the playlist into the NetworkPlayer.
New cancels the complete playlist.



Why Schnick Schnack Systems?

As installation times become increasingly shorter the complexity of systems simultaneously increases as do the requirements of customers.

We are a supplier who delivers high-quality reliable systems – under tight deadline constraints that are not only quick to install but also simple to operate and service.

Schnick-Schnack-Systems GmbH

Mathias-Brüggen-Straße 79
50829 Cologne (Germany)

Phone +49 (0) 221/99 2019-0
Fax +49 (0) 221/16 85 09-73

info@schnickschnacksystems.com
www.schnickschnacksystems.com

© 2017 Schnick-Schnack-Systems GmbH

Version August 2017: All technical data and the weight and dimension information were carefully created – errors reserved. Any colour deviations are printing-related.

We reserve the right to make changes that serve further improvement.